



PALAZZO NAIADI | ROMA

THE DEDICA ANTHOLOGY

PALAZZO NAIADI  
THE DEDICA ANTHOLOGY

ROMA

# UNIQUENESS & BEAUTY

*The magic imperial atmosphere of the Eternal City. Partly suspended over the ancient ruins of the Thermal Baths of Diocletian, the Palazzo Naiadi Roma welcomes you to a sophisticated and incredibly suggestive atmosphere.*



Panorama Room



Sun Terrace

Welcome to the Palazzo Naiadi Roma (hall)

## Rooms

238 rooms including:  
12 Junior Suites  
3 Executive Suites  
2 Presidential Suites

## Facilities

Roof garden with pool/lounge  
SPA & fitness centre  
3 Restaurants & Champagnerie  
8 Meeting rooms

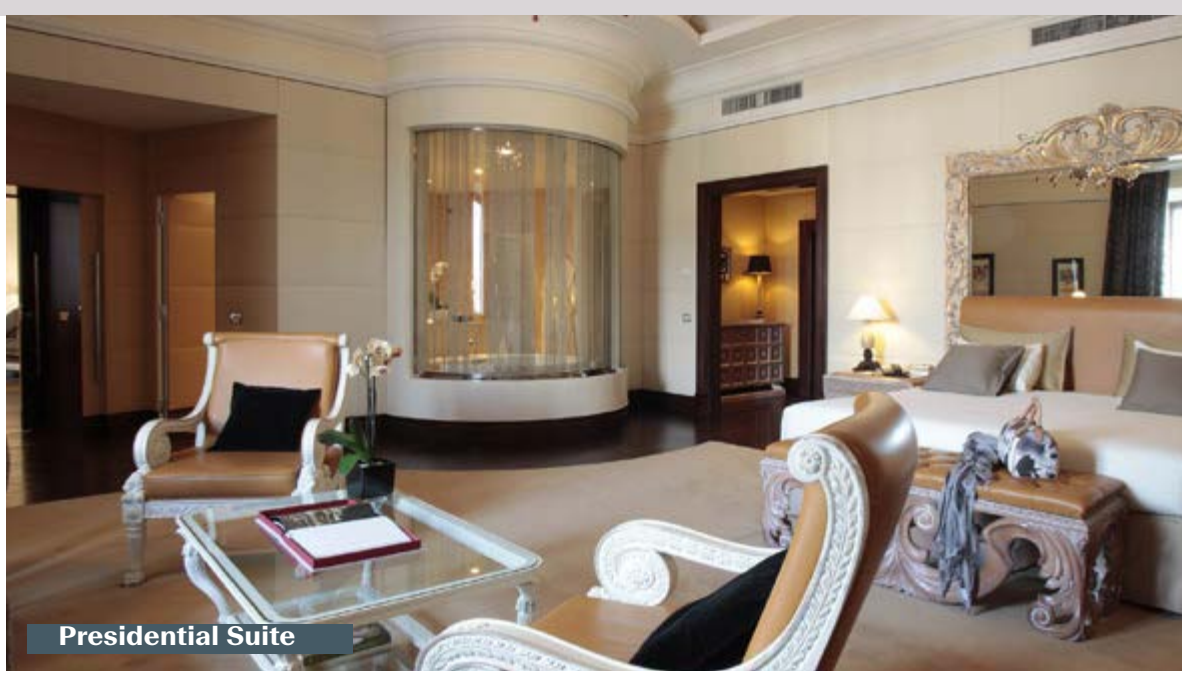




**Terrace on top of the roof - A heart-taking view from the top of the Palazzo Naiadi Roma**



Presidential Suite



Presidential Suite



Panorama Room



**Executive Suite**



**Exclusive Room**



**Classic Room**



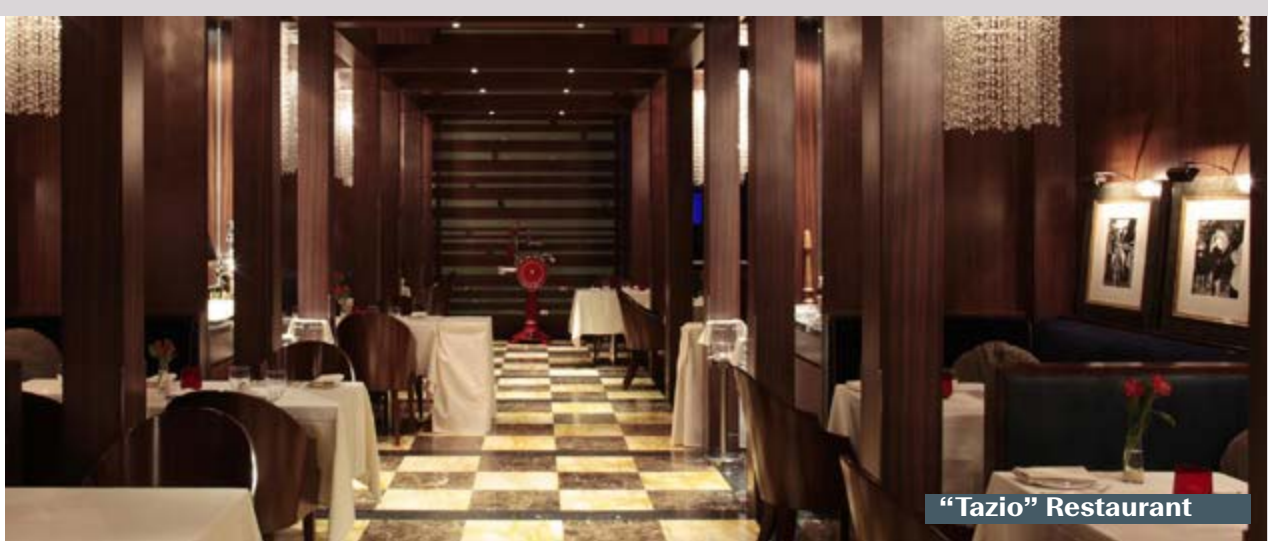
**Executive Suite (Bathroom)**



**Executive Suite**



“Tazio” Bar



“Tazio” Restaurant



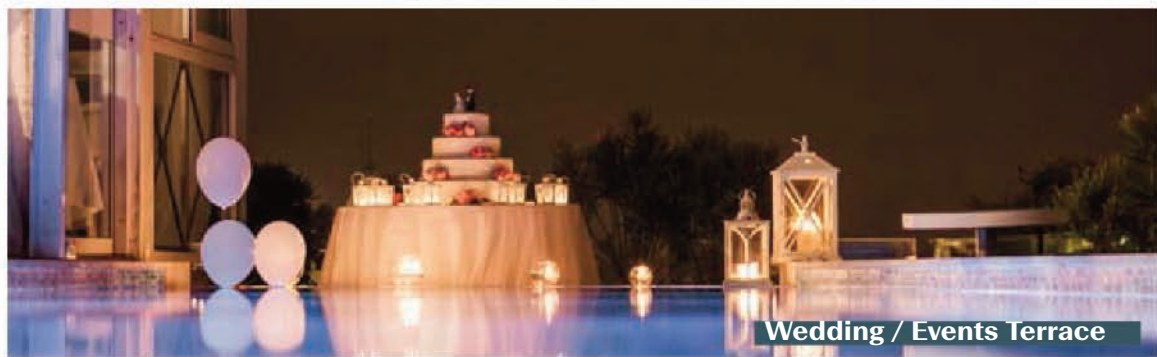
“La Frusta” Breakfast Room



**“Fusion” SPA**



**“Diocleziano” Meeting Room**



**Wedding / Events Terrace**



**Terrace Wedding set-up**



# EVENTS

## PALAZZO NAIADI ROMA



	<i>SURFACE</i> <small>mq / m<sup>2</sup> / sqm</small>	<i>NATURAL</i> <i>LIGHT</i>	<i>BANQUET</i>	<i>BOARD</i>	<i>CLASS</i>	<i>COCKTAIL</i>	<i>"U" TABLE</i>	<i>CABARET</i>	<i>THEATRE</i>
<b>Roof Terrace</b>	892	YES	350*	-	-	600	-	-	-
<b>Esedra</b>	47,25	-	2+	24	24	30	20	14	40
<b>Michelangelo</b>	135	-	70-80	40	60*	100	42	50	120
<b>Giunone</b>	53	-	-	26	28	40	24	14	50
<b>Diocleziano</b>	160	-	130	40	80*	180	50	80	180-200
<b>Diana</b>	36	YES	-	14	14	20	16	-	24
<b>Venere</b>	12,5	YES	-	5	-	10	-	-	-
<b>Minerva</b>	15	YES	-	8	-	10	-	-	-
<b>Olimpo</b>	10,8	YES	-	4	-	-	-	-	-
<b>Solarium</b>	92	YES	60	-	-	80	-	-	-
<b>Lounge Area</b>	134,82	YES	40	20	-	60	-	20	20

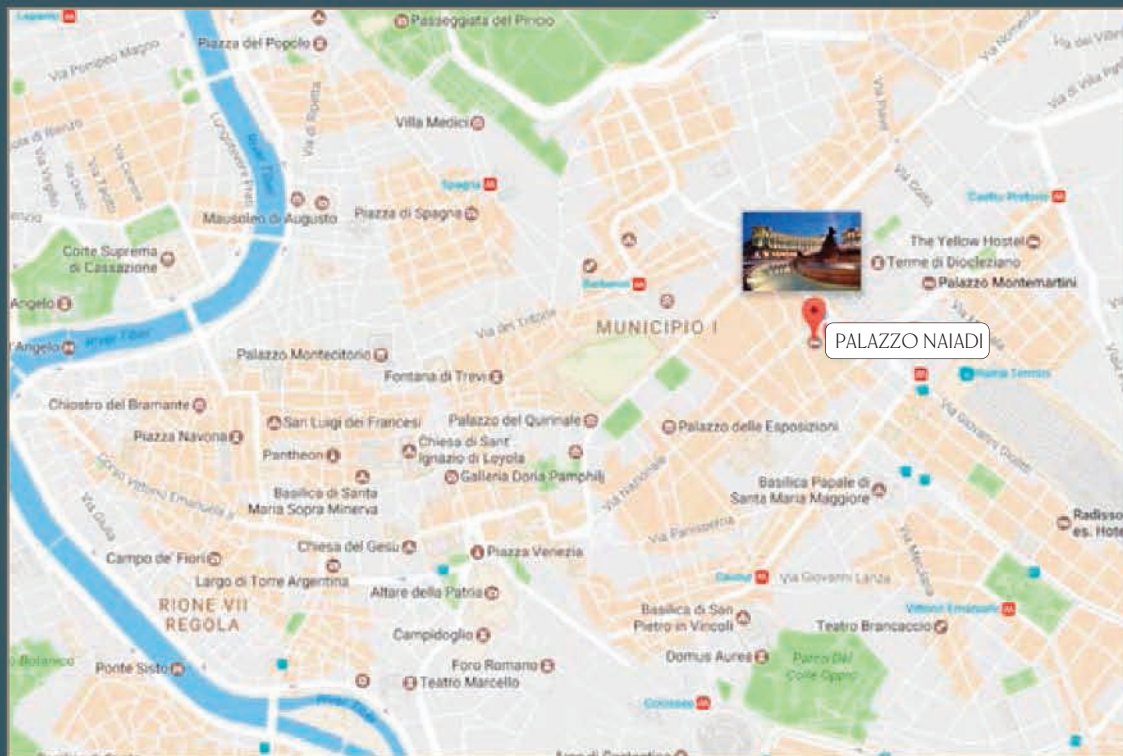




*5* reasons  
to visit Rome



# LOCATION



## Distances

25 km from the motorway:  
800 m from Termini Railway Station  
1,5 km from “Piazza di Spagna”

## Main Airports

25 km from “Leonardo Da Vinci” Airport,  
Fiumicino:

- 45 minutes by taxi
- 35 minutes by train from Termini Station

27 km from “Ciampino” Airport:

- 35 minutes by taxi
- 50 minutes by bus from Termini Station

*It also possible to book a pick-up service  
directly at the Hotel Reception Desk.*

# PALAZZO NAIADI | ROMA

THE DEDICA ANTHOLOGY

---

## contacts

### Meetings & Events

Phone: +39 06 48938 090 / 977 / 978 / 014

Mail: [congress.naiadi@dahotels.com](mailto:congress.naiadi@dahotels.com)

Piazza della Repubblica, 47 - 00185 Rome

Phone: +39 06 489 381

Fax: +39 06 489 380 00

Mail: [reception.naiadi@dahotels.com](mailto:reception.naiadi@dahotels.com)

[www.dahotels.com/palazzo-naiadi-roma](http://www.dahotels.com/palazzo-naiadi-roma)